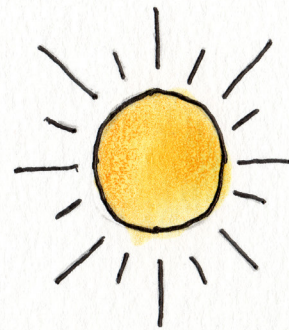




# TASH CONFERENCE

# PHOENIX

# ARIZONA



DECEMBER 5-7

# 2019



#2019TASHCONF

[www.tash.org/conference2019](http://www.tash.org/conference2019)

## SPONSOR & EXHIBITOR OPPORTUNITIES

1101 15th Street NW, Suite 1212, Washington DC 20005  
Phone (202) 467-5730 X1316 | Fax (202) 540-9019



# ABOUT TASH



Founded in 1975, TASH is an international leader in disability advocacy. The mission of TASH is to promote the full inclusion and participation of people with significant disabilities in every aspect of their community, and to eliminate the social injustices that diminish human rights.

TASH supports inclusion and the human rights of people with significant disabilities.

The inclusive practices we promote are backed by research and are shown to improve outcomes for all people. TASH envisions a world where all people are afforded the dignity of high expectations and supported to live in accordance with their aspirations as full members of and contributors to their communities, without control from another person or system and regardless of the extent of their support needs.

## **Together, our mission is advanced through:**

- Advocacy for equity, opportunities, social justice and human rights
- Education of the public, government officials, community leaders and service providers
- Research that translates excellence to practice
- Individualized, quality supports in place of congregate and segregated settings and services
- Legislation, litigation and public policy consistent with the mission and vision of TASH



# 2019 TASH CONFERENCE

December 5-7 | Sheraton Grand at Wild Horse Pass | Phoenix, AZ

The TASH Conference brings together self-advocates, family members, educators, professionals, researchers, service providers, and other allies to share resources and success stories, learn about field-driven best practices, and network within a community engaged in shared values. This year's conference theme, "***Building Diverse and Inclusive Communities***," reminds us that equity, opportunity, and inclusion relies on the input of broad perspectives and experiences.

The TASH Conference is attended by passionate leaders, experts, and advocates from every corner of the disability community. Conference attendees are influential in their fields and communities, and play an important role in the provision of services and supports for the millions of individuals and organizations around the world; and includes professors and researchers from leading institutions; those involved in local, state, and federal governments and public policy; special and general educators, and school administrators; self-advocates, adult service providers; students, family members, and many others.

The unique community that attends the TASH Conference brings many benefits for sponsors and exhibitors.

## Partnering with TASH provides:

- A platform to share your story and build brand awareness
- Access to a large, discerning consumer base, interested in the highest quality of life for ALL
- Access to customers with resources and the need to utilize your solutions
- The opportunity to showcase innovations to an international audience
- Top quality professional development on timely topics
- Access to the nation's thought leaders on best practices in education, employment, and supported living



*TASH's Board of Directors and Staff are standing by to answer your questions. How can we help you today?*

# 2019 TASH CONFERENCE

December 5-7 | Sheraton Grand at Wild Horse Pass | Phoenix, AZ

## Conference Audience Profile

Advocates (Self-Advocates, Family, & Supporters)	22%
Professionals	19%
Professors/Researchers	14%
Students	12%
Special/General Educators	12%
Adult Service Providers	10%
Government/Public Policy Professionals	10%



## Conference Schedule *(subject to change)*

### Thursday, December 5

8:00 AM – 5:00 PM	Thursday Workshops
4:00 PM – 7:00 PM	Exhibit Hall Opens
7:00 PM – 9:30 PM	Film Festival

### Friday, December 6

8:00 AM – 7:00 PM	Exhibit Hall Open
8:15 AM – 9:30 AM	Opening General Session
9:45 AM – 4:30 PM	Breakout Sessions
5:00 PM – 6:30 PM	Poster Presentations & Networking Reception
7:00 PM – 9:30 PM	#2019TASHBASH Dance

### Saturday, December 7

8:00 AM – 12:00 NOON	Exhibit Hall Open
8:30 AM – 4:10 PM	Breakout Session
12:00 NOON – 1:00 PM	Membership Lunch & Awards Ceremony
4:20 PM – 5:00PM	Closing General Session



# SPONSORSHIP OPPORTUNITIES

## Platinum | \$20,000

- Option to sponsor the Membership Lunch & Awards Ceremony, Let's Connect Mini-Luncheons, or Networking Reception
- Option to sponsor a General Session, Poster Presentations, Thursday Workshop Track (example: Employment Track), Film Festival, or the #2019TASHBASH Dance
- Option to sponsor up to four scholarship (self-advocate and/or family member) recipients
- Logo placement on our Selfie Station banner
- Recognition in pre/post conference email communications
- Four full conference registrations
- One attendee bag insert\*
- One basic exhibit booth in the Exhibit Hall
- Recognition on the conference website and signage



*"High Expectations... Period!"*



*We believe recognition matters!*

## Gold | \$10,000

- Option to sponsor one morning coffee/tea break or a small group networking reception
- Option to sponsor up to two scholarship (self-advocate and/or family member) recipients
- Recognition in pre/post conference email communications
- Two full conference registrations
- One attendee bag insert\*
- One basic exhibit booth in the Exhibit Hall
- Recognition on the conference website and signage

## Silver | \$5,000

- One printed attendee bag insert\*
- One full conference registration
- One basic exhibit booth in the Exhibit Hall
- Recognition on the conference website and signage

## Bronze | \$3,500

- Option to sponsor one scholarship recipient
- One basic exhibit booth in the Exhibit Hall
- Recognition on the conference website and signage

## Supporter | \$2,000

- One attendee bag insert\*
- Recognition on the conference website and signage



*"Practical tools and powerful testimonials!"*

*\*Attendee bag inserts can include a full or half page flyer, pen, swag, etc. Attendee bag inserts must be pre-approved by TASH.*



# Additional Sponsorship Opportunities

The following sponsorship opportunities include recognition on the conference website and signage.

## Membership Luncheon | \$15,000

Curb the cravings by sponsoring our Membership Luncheon & Awards Ceremony. Sponsor may submit a short, 2-3 minute video or presentation to be delivered during the opening remarks. *Presentation must be pre-approved by TASH.*

## Networking Reception and Poster Presentations | \$12,000

A day of learning always leads to stimulating and invigorating conversations! Be the host while everyone gathers in the same place at the same time. Sponsor logo will be featured on cocktail napkins. Sponsor may deliver a 2-3 minute welcome address. *Presentation must be pre-approved by TASH.*

## Youth Leadership Institute | \$10,000

The next generation of youth with disabilities and their siblings is our future! At the Youth Leadership Institute, young people will gather to share their stories, network and gain valuable leadership skills. Your logo will be featured on the Youth Leadership Institute Agenda.

## Continue the Conversation - Employment Reception | \$10,000

Nothing works up an appetite for networking more than a full day of learning about Employment First at TASH's and the YES! Center's special tracks on policy and best practices! Sponsor logo will be featured on cocktail napkins along with a 2-3 minute welcome address. *Presentation must be pre-approved by TASH.*

## Let's Connect Mini-Luncheons | \$7,500

Attendees will select from one of eight mini-luncheons to attend. Boxed lunches with your sponsor logo and half-page flyer insert will be provided to lunch attendees. Sponsor will design and provide the half-page flyers. *Flyer content must be pre-approved by TASH.*

## Taco Bar/Mac & Cheese Station | \$7,500

An abundance of energy is required before getting out on the #2019TASHBASH dance floor! You can ensure attendees are fueled up before dancing the night away! Sponsor logo will be provided on cocktail napkins.

## Attendee Bag | \$5,000

A key on-site promotional opportunity, the attendee bag is distributed to all conference attendees and speakers the registration check-in process. Sponsor will design and provide the attendee bags. *Attendee bag must be pre-approved by TASH.*

## CART/Interpreter Services | \$5,000

TASH offers CART services during the opening and closing general sessions as well as membership lunch. This is an excellent opportunity for your organization to gain exposure among all of the conference attendees while contributing to a truly inclusive event.



# Sponsorship Opportunities (cont'd)

All of the following sponsorship opportunities include recognition on the conference website and signage.

## Film Festival | \$5,000

TASH's Film Festival features a series of films that highlight positive stories around disability and community. Each film is followed by a short Q&A. Gain exposure while hosting a movie night that comes with light refreshments.

## Mobile App | \$5,000

The conference mobile app provides sponsors with prime exposure to conference attendees before, during, and after the conference. You'll be front and center with this investment, which includes: sponsor logo on the home screen and exclusive presence in menu navigation bar of the mobile app.

## Morning Coffee/Tea Break | \$4,000/each

Help keep attendees energized and ready to learn! Sponsoring a morning coffee/tea break helps "amp" up your visibility at the TASH Conference. Sponsor logo will be featured on cocktail napkins.

## #2019TASHBASH Dance | \$3,000

TASH's Dance is without doubt the most exciting, energizing, and fun event at the TASH Conference. Sponsor can supply decorations, photo booths, etc. to be used during the dance.

## "At-a-Glance" Conference Schedule | \$2,500

This two-page "At-a-Glance" schedule is a great tool to help attendees navigate the many sessions and special events throughout the conference. Your logo will be featured on the handout distributed to all attendees during the registration check-in process.

## Fireside S'mores & Storytelling | \$2,500

Learn about the venue's Native American heritage through stories shared around the outdoor fire pit. And, s'mores will guarantee to make the experience all the sweeter!

## Lanyards | \$2,500

Wrapped around the neck of 900+ attendees, lanyards are a great way to showcase your brand. Sponsor will design and provide lanyard. *Lanyard must be pre-approved by TASH.*

## Attendee Bag Insert | \$1,000

Get your marketing collateral into the hands of all conference attendees when they pick up their attendee bag at check-in. This sponsorship offers the opportunity to share your story and feature your brand. *Attendee Bag Insert must be pre-approved by TASH.*

## Other ideas?

Let's work together to customize a package that will achieve your marketing goals!

***Ready to sponsor? Turn to page 8.***



# 2019 EXHIBITOR OPPORTUNITIES

Exhibiting at the TASH Conference is an outstanding opportunity to promote your products and services to conference attendees from Thursday afternoon through Saturday at noon. The Exhibit Hall at the hotel provides maximum exposure and high value for your investment. A unique feature of the TASH Conference is that all morning coffee/tea breaks will take place in the middle of the Exhibit Hall, giving exhibitors tremendous exposure and high traffic during the conference. Space is limited, and early bird discounts are available through **Tuesday, September 3, 2019**. Reserve your space today!

## As an exhibitor at the TASH Conference, you will receive:

- Two full days of exhibiting (Thursday PM through Saturday at noon) with an audience of over 900 attendees
- One 3'x6' skirted table, two chairs
- Exhibitor information on conference website and signage
- Complimentary access to Networking Reception

## Exhibitor Types & Pricing

### Corporate/For-Profit Exhibitor:

\$1,500 - Regular Pricing

\$1,300 - Early-Bird Pricing (through September 3)

### Non-Profit Exhibitor:

\$1,000 - Regular Pricing

\$800 - Early-Bird Pricing (through September 3)

### Micro-Enterprise/Self-Advocate Exhibitor:

\$150 - Regular Pricing

\$100 - Early-Bird Pricing (through September 3)



### Note:

Exhibitor registration includes access only to the Exhibit Hall and Networking Reception for up to two people. To register for the full conference, please visit: [www.tash.org/conference2019](http://www.tash.org/conference2019).

***Ready to be an exhibitor? Turn to page 9.***



# SPONSOR CONFIRMATION FORM

Thank you for choosing to be a **2019 TASH Conference** sponsor! Please complete the sponsor confirmation form below. Once completed, you may send it, along with payment, one of three ways:

By Mail: TASH, 1101 15th Street NW, Suite 1212, Washington, DC 20005  
By Fax: (202) 540-9019; Attn: Ruthie-Marie Beckwith  
By Email: rbeckwith@tash.org

Questions? Please contact Ruthie-Marie at rbeckwith@tash.org

Name \_\_\_\_\_  
Company/Org \_\_\_\_\_  
Address \_\_\_\_\_  
City/State/ZIP \_\_\_\_\_  
Phone \_\_\_\_\_ Email \_\_\_\_\_

## Sponsorship Packages & Add-On Opportunities

<input type="checkbox"/> Platinum	\$20,000	<input type="checkbox"/> Attendee Bag	\$5,000
<input type="checkbox"/> Gold	\$10,000	<input type="checkbox"/> Film Festival	\$5,000
<input type="checkbox"/> Silver	\$5,000	<input type="checkbox"/> CART Services	\$5,000
<input type="checkbox"/> Bronze	\$3,500	<input type="checkbox"/> Mobile App	\$5,000
<input type="checkbox"/> Supporter	\$2,000	<input type="checkbox"/> Morning Coffee/Tea Break	\$4,000/each
<input type="checkbox"/> Member Luncheon	\$15,000	<input type="checkbox"/> #2019TASHBASH Dance	\$3,000
<input type="checkbox"/> Networking Reception	\$12,000	<input type="checkbox"/> Fireside S'mores & Storytelling	\$2,500
<input type="checkbox"/> Youth Leadership Institute	\$10,000	<input type="checkbox"/> At a Glance Conference Schedule	\$2,500
<input type="checkbox"/> Employment Reception	\$10,000	<input type="checkbox"/> Lanyards	\$2,500
<input type="checkbox"/> Let's Connect Mini Luncheons	\$7,500	<input type="checkbox"/> Attendee Bag Insert	\$1,000
<input type="checkbox"/> Taco Bar/Mac & Cheese Station	\$7,500		

## Payment Information

☐ Check (make payable to TASH) ☐ Purchase Order P.O. #: \_\_\_\_\_ (send copy of P.O. with form)

☐ Credit Card (select card type) ☐ American Express ☐ Visa ☐ MasterCard ☐ Discover

Card #: \_\_\_\_\_ Expiration: \_\_\_\_/\_\_\_\_

Name on Card: \_\_\_\_\_ CVV: \_\_\_\_\_

Authorized Signature: \_\_\_\_\_

Would you like to make a tax-deductible donation to TASH?

☐ \$500 ☐ \$250 ☐ \$100 ☐ \$50 ☐ \$ \_\_\_\_\_

Total Payment (add sponsorship/exhibitor amount plus donation, if applicable) \$: \_\_\_\_\_



# EXHIBITOR CONFIRMATION FORM

Thank you for choosing to be a **2019 TASH Conference** exhibitor! Please complete the exhibitor confirmation form below. Once completed, you may send it, along with payment, one of three ways:

By Mail: TASH, 1101 15th Street NW, Suite 1212, Washington, DC 20005

By Fax: (202) 540-9019; Attn: Ruthie-Marie Beckwith

By Email: rbeckwith@tash.org

Questions? Please contact Ruthie-Marie at rbeckwith@tash.org

Name \_\_\_\_\_

Company/Org \_\_\_\_\_

Address \_\_\_\_\_

City/State/ZIP \_\_\_\_\_

Phone \_\_\_\_\_ Email \_\_\_\_\_

## Exhibitor Types

☐ Corporate/For-Profit Exhibitor \$1,500  
(\$1,300 if paid through September 3rd)

☐ Non-Profit Exhibitor \$1,000  
(\$800 if paid through September 3rd)

☐ Micro-Enterprise/Self-Advocate Exhibitor \$150  
(\$100 if paid through September 3rd)

## Payment Information

☐ Check (make payable to TASH) ☐ Purchase Order P.O. #: \_\_\_\_\_ (send copy of P.O. with form)

☐ Credit Card (select card type) ☐ American Express ☐ Visa ☐ MasterCard ☐ Discover

Card #: \_\_\_\_\_ Expiration: \_\_\_\_\_/\_\_\_\_\_/\_\_\_\_\_

Name on Card: \_\_\_\_\_ CVV: \_\_\_\_\_

Authorized Signature: \_\_\_\_\_

Would you like to make a tax-deductible donation to TASH?

☐ \$500 ☐ \$250 ☐ \$100 ☐ \$50 ☐ \$ \_\_\_\_\_

Total Payment (add sponsorship/exhibitor amount plus donation, if applicable) \$: \_\_\_\_\_